

HITACHI
Inspire the Next

**HITACHI PACKAGED AIR CONDITIONERS
WATER-COOLED TYPE**

日立水冷式箱型空調機



Models :	
Free-Blow Type	Duct-Connection Type
直吹型	風管型
RP-3W5	RP-5WL5
RP-4W5	RP-8WL5
RP-5W5	RP-10WL5
RP-8W5	RP-15WL5
RP-10W5	RP-20WL5
RP-15W5	RP-25WL5
	RP-30WL5
	RP-40WL5

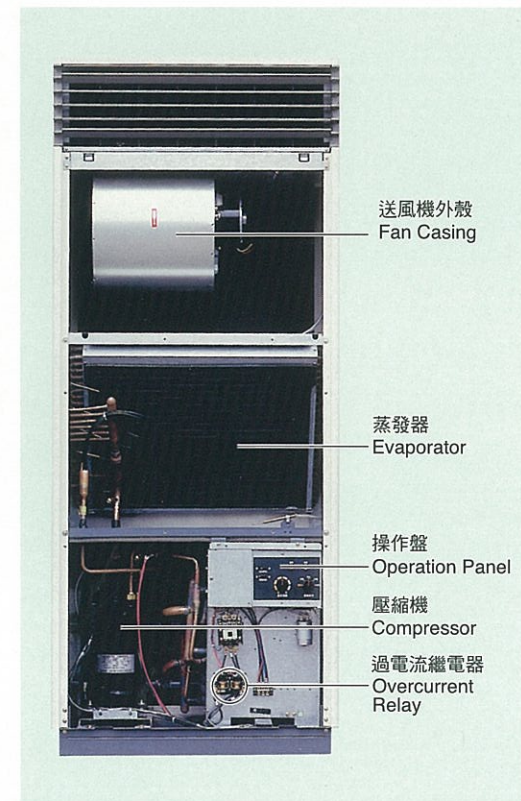
Nominal Capacity Range
額定容量範圍

8,000 kcal/h to 100,000 kcal/h at 50Hz
9,200 W to 116,200 W at 50Hz

STREAM LINED SHAPE AND TOP OF THE LINE PERFORMANCE PERFECTED WITH A HIGH-EFFICIENCY COMPONENTS

HITACHI has developed packaged air conditioners <water-cooled type> with a sleek new look. In addition to excellent performance providing high efficiency, high reliability and low noise, the design has been upgraded. Moreover, a slim design has further relaxed restrictions on installation. The air conditioners of this type are available for use in factories, shopping center, offices, restaurants, karaoke bars, super markets and similar places. An extensive lineup features 3 to 40 horsepower models. All horsepower models adopt a high efficiency scroll compressor. Users can choose the optimum model according to applications or purposes.

日立水冷式箱型空調機，除了具有流線型美觀的設計外，它優越的品質更是備受肯定，為了提升產品性能，在設計上更要求高效率、低噪音及高信賴度。除此之外，更精巧地減少安裝空間的限制，無論是工廠、購物中心、辦公室、餐廳、卡拉OK俱樂部或超級市場等類似場所均適用。日立水冷式箱型的機型包括3~40匹馬力，全系列的機型都採用了渦卷式壓縮機，顧客可依自己的需求選擇最適合的機型，搭配使用。



FEATURES

1. Full line models, all new function, slim design.
2. Low noise and low vibration.
3. Easy installation.
 - (1) Easy change of Free-Blow type and Duct-connection type.
 - (2) Remote Control (For Special Order).
 - (3) Ensure the Space for optional electrical parts.
4. Easy Maintenance.
 - (1) Failure alarm (Standard Equipment).
 - (2) Air filter.

OPTIONAL PARTS

1. A electric heater, a hot water heater, a steam heater.
2. A humidifier.
3. Long life air filter

特點

1. 機種齊全，全新功能，流線型設計
2. 低噪音、低振動
3. 安裝容易
 - (1) 直吹型、風管型互換容易
 - (2) 遠方操作（特殊受注）
 - (3) 選購配件之安裝空間增大
4. 保養容易
 - (1) 故障顯示燈（標準配備）
 - (2) 空氣濾網

選購配件

1. 電氣加熱器、溫水加熱器、蒸氣加熱器
2. 加濕器
3. 長壽命空氣濾網

GENERAL DATA (一般規格)

FREE-BLOW TYPE (直吹型)

Item (unit)		Model	RP-3W5	RP-4W5	RP-5W5	RP-8W5	RP-10W5	RP-15W5	
Nominal Cooling Capacity*	50Hz	kcal/h	8,000	10,000	14,000	21,000	28,000	42,000	
		W	9,300	11,600	16,300	24,400	32,600	48,800	
	60Hz	kcal/h	9,000	11,200	15,000	22,500	30,000	45,000	
		W	10,500	13,000	17,400	26,200	34,900	52,300	
Capacity Control		%	100.0	100.0	100.0	100.0	100.0	100.63.0	
Cabinet Color		Synthetic Resin Paint Baked on Finished Steel Plates							
Front Panel, Side Panel (MUNSELL Code)			Beige (2.5Y 8/2)	Beige (2.5Y 8/2)	Beige (2.5Y 8/2)	Beige (2.5Y 8/2)	Beige (2.5Y 8/2)	Beige (2.5Y 8/2)	
Air Outlet Grill (MUNSELL Code)			Gray (2.5Y 4.5/0.7)	Gray (2.5Y 4.5/0.7)	Gray (2.5Y 4.5/0.7)	Gray (2.5Y 4.5/0.7)	Gray (2.5Y 4.5/0.7)	Beige (2.5Y 8/2)	
Outer Dimensions	Height	mm	1,750	1,750	1,950	1,950	1,950	2,150	
		(in.)	(68-7/8)	(68-7/8)	(76-3/4)	(76-3/4)	(76-3/4)	(84-11/16)	
	Width	mm	650	650	800	1,100	1,400	1,400	
		(in.)	(25-5/8)	(25-5/8)	(31-1/2)	(43-5/16)	(55-1/8)	(55-1/8)	
Depth	mm	450	450	500	500	500	750		
	(in.)	(17-3/4)	(17-3/4)	(19-11/16)	(19-11/16)	(19-11/16)	(29-1/2)		
Net Weight		kg (lbs.)	120 (265)	130 (287)	160 (353)	270 (595)	305 (672)	460 (1,014)	
Refrigerant**			R-22	R-22	R-22	R-22	R-22	R-22	
Flow Control			CPT	CPT	CPT	CPT	CPT	CPT	
Number of Circuits			1	1	1	1	1	2	
Compressor Type			Hermetic Scroll	Hermetic Scroll	Hermetic Scroll	Hermetic Scroll	Hermetic Scroll	Hermetic Scroll	
Quantity			1	1	1	1	1	1+1	
Evaporator		Multi-Pass Cross-Finned Tube							
Condenser		Coiled Double Tube							
Evaporator Fan		Multi-Blade Centrifugal Fan							
Nominal Air (Hi/Lo)	m³/min		28/25	36/32	44/38	66	88	130	
	m³/s		0.47/0.42	0.60/0.53	0.73/0.63	1.1	1.47	2.17	
Motor	(cfm)		(989/883)	(1,271/1,130)	(1,554/1,342)	(2,330)	(3,108)	(4,590)	
	kW (HP)		0.09 (0.12)	0.12 (0.16)	0.13 (0.17)	0.25 (0.33)	0.30 (0.40)	1.5 (2)	
Quantity			1	1	1	1	1	1	
Connections		Female Piping Thread Screw (Prepared on Both Sides)							
Condenser Water	Size								
	Inlet	FPT	1	1	1-1/4	1-1/2	1-1/2	2	
Outlet	FPT	1	1	1-1/4	1-1/2	1-1/2	2		
	Condensate Drain	FPT	1	1	1	1	1	1	
Emergency Drain		Female Piping Thread Screw (Prepared on Both Sides)							
Size	FPT	1/2	1/2	1/2	1/2	1/2	1/2		
	Wiring Hole	Knock Out Hole (Prepared on Both Sides)							
Size	mm	32.5	32.5	40.5	40.5	40.5	62		
	(in.)	(1-1/4)	(1-1/4)	(1-5/8)	(1-5/8)	(1-5/8)	(2-7/16)		
Approximate Packing List							Unit	Plenum Chamber	
Shipping Weight	kg	160	170	205	320	365	490	40	
	(lbs.)	(353)	(375)	(452)	(705)	(804)	(1,080)	(88)	
Height	mm	1,925	1,925	2,125	2,125	2,125	2,070	460	
	(in.)	(75-13/16)	(75-13/16)	(83-5/8)	(83-5/8)	(83-5/8)	(81-1/2)	(18-1/8)	
Width	mm	764	764	914	1,214	1,514	1,510	1,480	
	(in.)	(30-1/16)	(30-1/16)	(36)	(47-13/16)	(59-5/8)	(59-7/16)	(58-9/32)	
Depth	mm	578	578	628	628	628	880	850	
	(in.)	(22-3/4)	(22-3/4)	(24-3/4)	(24-3/4)	(24-3/4)	(34-5/8)	(33-13/32)	
Measurements		m³	0.85	0.85	1.22	1.62	2.02	2.75	0.58

CPT : Capillary Tube

Notes:

- * The nominal cooling capacity is based on the standard of JIS B8616-1999
 Evaporator Air Inlet Temperature: 27°C DB (80.6°F DB)
 19°C WB (66.2°F WB)
 Condenser Water Inlet Temperature: 30°C (86°F)
 Condenser Water Outlet Temperature: 35°C (95°F)
- ** Factory-Charged

Working Range:

- Evaporator Air Inlet Temperature at Standard Air Flow :
- Maximum : 32°C DB / 23°C WB (89.6°F DB / 73.4°F WB)
 - Minimum : 21°C DB / 15°C WB (69.8°F DB / 59.0°F WB)
- Condenser Water Outlet Temperature:
- Maximum : 38°C (100.4°F)
 - Minimum : 21°C (69.8°F)

Standard Power Supply

Main (3φ)	Control (1φ)
220V 60Hz	220V 60Hz
220V 50Hz	220V 50Hz
380V 50Hz	220V 50Hz
415V 50Hz	240V 50Hz

DUCT-CONNECTION TYPE (風管型)

Item (unit)		Model	RP-5WL5	RP-8WL5	RP-10WL5	RP-15WL5	RP-20WL5	RP-25WL5	RP-30WL5	RP-40WL5
Nominal Cooling Capacity*	50Hz	kcal/h	14,000	21,000	28,000	42,000	56,000	70,000	84,000	100,000
		W	16,300	24,400	32,600	48,800	65,100	81,400	97,700	116,300
	60Hz	Btu/h	55,600	83,300	111,100	166,700	222,200	277,800	333,300	396,800
		kcal/h	15,000	22,500	30,000	45,000	60,000	75,000	90,000	112,000
Capacity Control	%	W	17,400	26,200	34,900	52,300	69,800	87,200	104,700	130,300
		Btu/h	59,500	89,300	119,000	178,600	238,100	297,600	357,100	444,400
Cabinet Color			Synthetic Resin Paint Baked on Finished Steel Plates							
Front Panel, Side Panel (MUNSELL Code)			Beige (2.5Y 8/2)	Beige (2.5Y 8/2)	Beige (2.5Y 8/2)	Beige (2.5Y 8/2)	Beige (2.5Y 8/2)	Beige (2.5Y 8/2)	Beige (2.5Y 8/2)	Beige (2.5Y 8/2)
Air Outlet Grill (MUNSELL Code)			—	—	—	—	—	—	—	—
Outer Dimensions	Height	mm	1,730	1,730	1,730	1,850+30	1,850+30	2,000+30	2,000+30	2,000+30
		(in.)	(68-1/8)	(68-1/8)	(68-1/8)	(72-13/16+1-3/16)	(72-13/16+1-3/16)	(78-3/4+1-3/16)	(78-3/4+1-3/16)	(78-3/4+1-3/16)
	Width	mm	800	1,100	1,400	1,400	1,700	1,700	2,000	2,000
		(in.)	(31-1/2)	(43-5/16)	(55-1/8)	(55-1/8)	(66-15/16)	(66-15/16)	(78-3/4)	(78-3/4)
Net Weight	kg (lbs.)	mm	500	500	500	750	750	900+65	900+65	1,270+65
		(in.)	(19-11/16)	(19-11/16)	(19-11/16)	(29-1/2)	(29-1/2)	(35-7/16+2-9/16)	(35-7/16+2-9/16)	(50+2-9/16)
Refrigerant**			R-22	R-22	R-22	R-22	R-22	R-22	R-22	R-22
Flow Control			CPT	CPT	CPT	CPT	CPT	CPT	CPT	CPT
Number of Circuits			1	1	1	2	2	2	3	3
Compressor Type			Hermetic Scroll	Hermetic Scroll	Hermetic Scroll	Hermetic Scroll	Hermetic Scroll	Hermetic Scroll	Hermetic Scroll	Hermetic Scroll
Quantity			1	1	1	2	2	3	3	3
Evaporator			Multi-Pass Cross-Finned Tube							
Condenser			Coiled Double Tube							
Evaporator Fan			Multi-Blade Centrifugal Fan							
Nominal Air Flow	m³/min		44	66	88	130	180	220	260	360
		m³/s	0.73	1.1	1.47	2.17	3.00	3.67	4.33	6
Motor	kW		(1,554)	(2,330)	(3,108)	(4,590)	(6,360)	(7,770)	(9,180)	(12,700)
		(HP)	(0.37)	(0.5)	(0.8)	(3)	(5)	(5)	(7.5)	(10)
Connections			Female Piping Thread Screw (Prepared on Both Sides)							
Condenser Water	Size	Inlet	FPT 1-1/4	FPT 1-1/2	FPT 1-1/2	FPT 2	FPT 2	FPT 2-1/2	FPT 2-1/2	FPT 2-1/2
		Outlet	FPT 1-1/4	FPT 1-1/2	FPT 1-1/2	FPT 2	FPT 2	FPT 2-1/2	FPT 2-1/2	FPT 2-1/2
Condensate Drain			Female Piping Thread Screw (Prepared on Both Sides)							
Size		FPT	1	1	1	1	1	1	1	1
Emergency Drain			Female Piping Thread Screw (Prepared on Both Sides)							
Size		FPT	1/2	1/2	1/2	1/2	1/2	1/2	1/2	1/2
Wiring Hole			Knock Out Hole (Prepared on Both Sides)							
Size		mm (in.)	40.5 (1-5/8)	40.5 (1-5/8)	40.5 (1-5/8)	62 (2-7/16)	62 (2-7/16)	62 (2-7/16)	62 (2-7/16)	80 (3-5/32)
Approximate Packing List										
Shipping Weight		kg (lbs.)	195 (430)	300 (661)	345 (760)	490 (1,080)	675 (1,488)	810 (1,786)	1,005 (2,216)	1,290 (2,841)
Height	mm (in.)		1,905 (75)	1,905 (75)	1,905 (75)	2,070 (81-1/2)	2,070 (81-1/2)	2,225 (87-5/8)	2,225 (87-5/8)	2,225 (87-5/8)
			914 (36)	1,214 (47-13/16)	1,514 (59-5/8)	1,510 (59-7/16)	1,810 (71-1/4)	1,860 (73-1/4)	2,160 (85-1/16)	2,160 (85-1/16)
Depth	mm (in.)		628 (24-3/4)	628 (24-3/4)	628 (24-3/4)	880 (34-5/8)	880 (34-5/8)	1,105 (43-1/2)	1,105 (43-1/2)	1,475 (58-1/16)
			1.09	1.45	1.81	2.75	3.30	4.57	5.31	7.09

CPT : 毛細管

註記 :

- * 額定冷氣能力是依據 JIS B8616-1999 規格冷氣條件：
蒸發器吸入空氣溫度： 27°C DB (80.6°F DB)
19°C WB (66.2°F WB)
冷凝器冷卻水入口溫度： 30°C (86°F)
冷凝器冷卻水出口溫度： 35°C (95°F)
- ** 工廠充填

運轉範圍 :

- 蒸發器吸入空氣溫度 (標準風量時) :
- 最高： 32°C DB / 23°C WB (89.6°F DB / 73.4°F WB)
最低： 21°C DB / 15°C WB (69.8°F DB / 59.0°F WB)
- 冷凝器冷卻水出口溫度 :
- 最高： 38°C (100.4°F)
最低： 21°C (69.8°F)

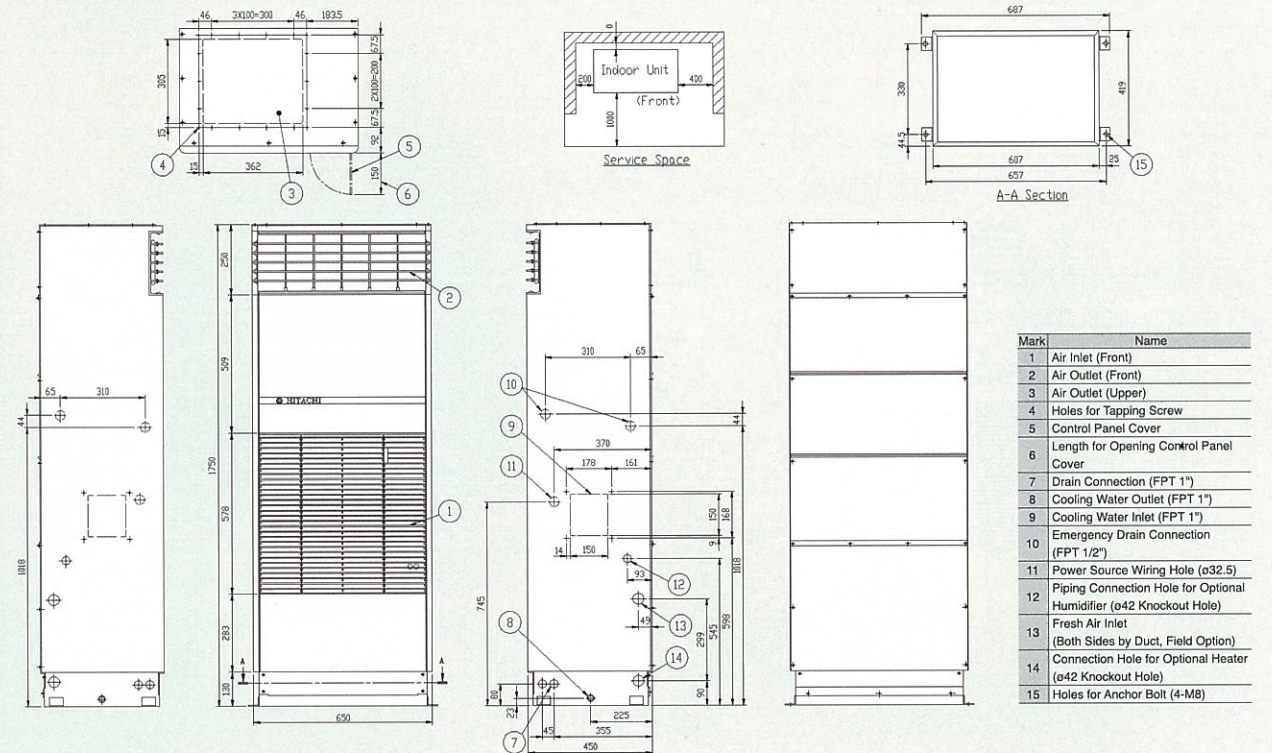
標準電源

主回路 (3φ)	操作回路 (1φ)
220V 60Hz	220V 60Hz
220V 50Hz	220V 50Hz
380V 50Hz	220V 50Hz
415V 50Hz	240V 50Hz

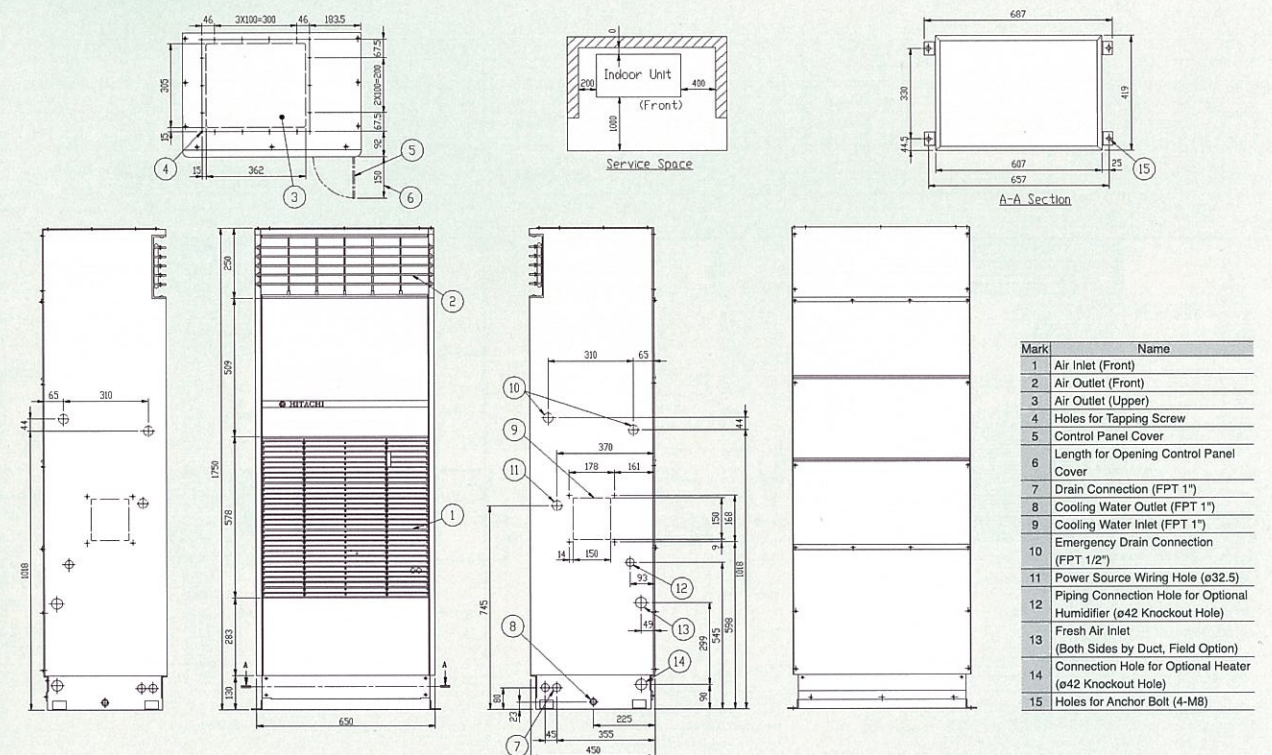
DIMENSION (外觀尺寸)

FREE-BLOW TYPE (直吹型)

RP-3W5

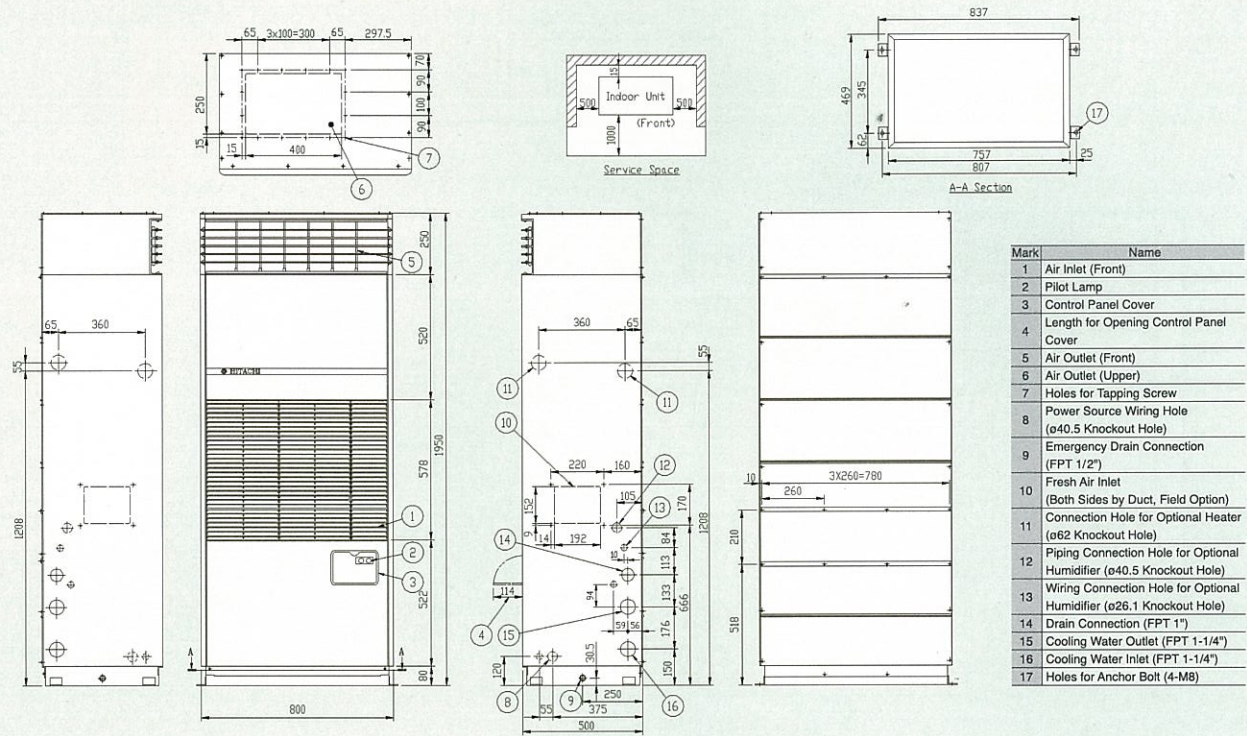


RP-4W5



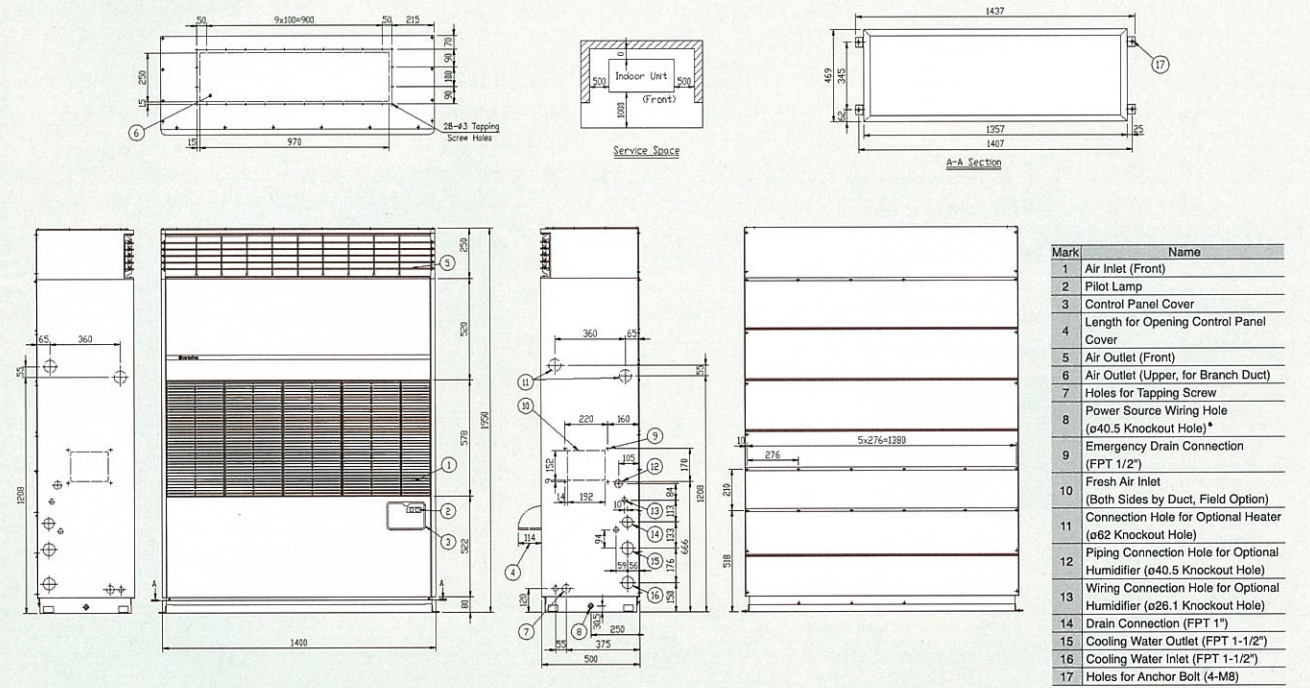
FREE-BLOW TYPE (直吹型)

RP-5W5

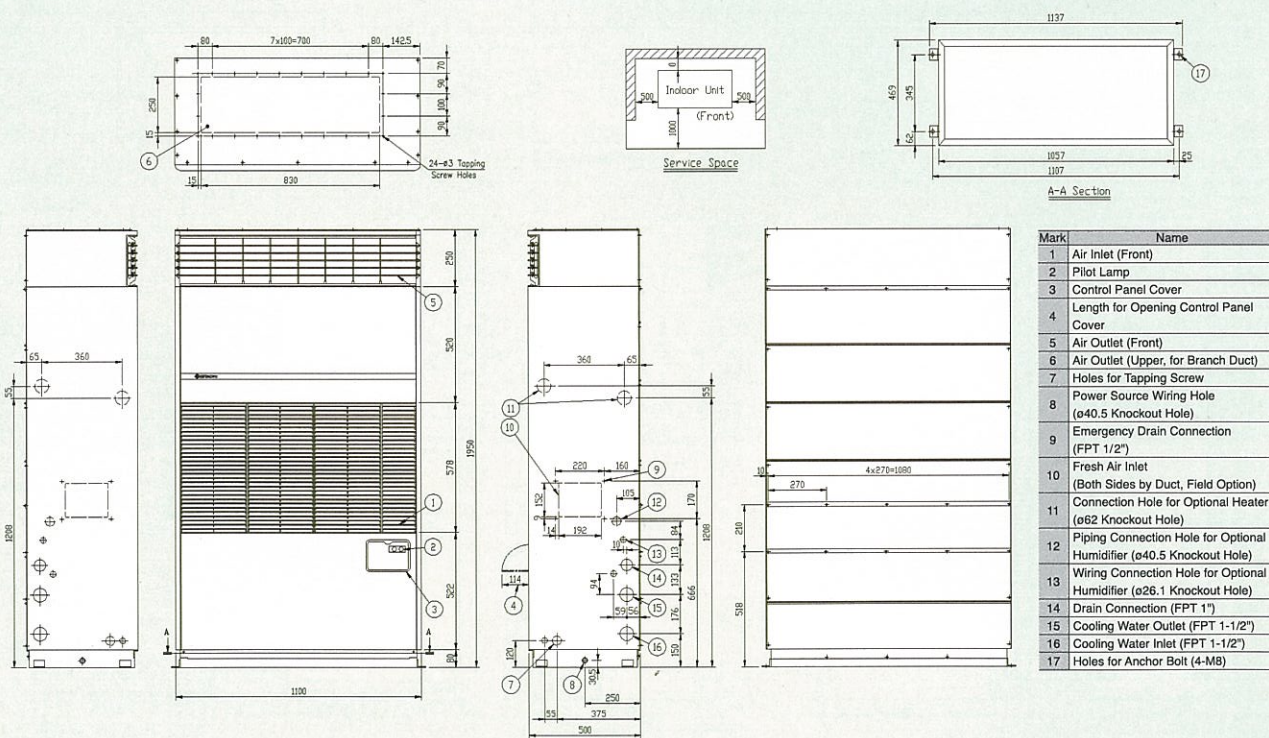


FREE-BLOW TYPE (直吹型)

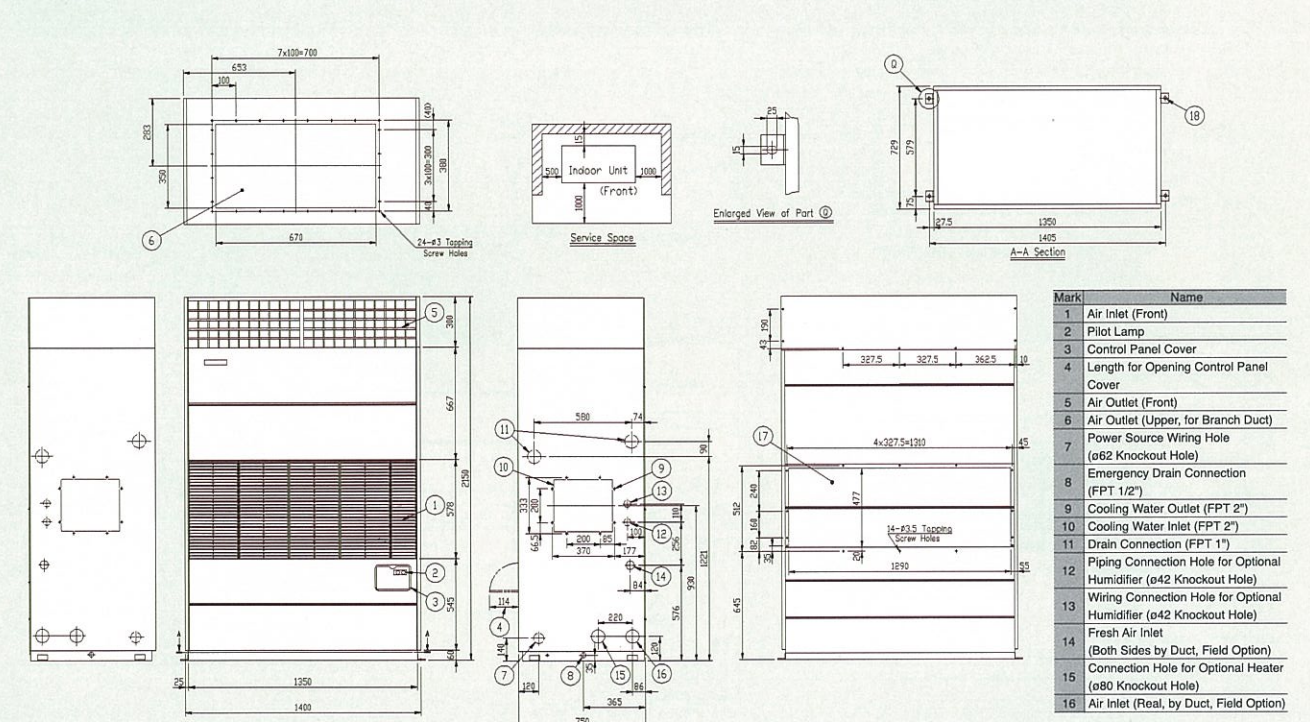
RP-10W5



RP-8W5

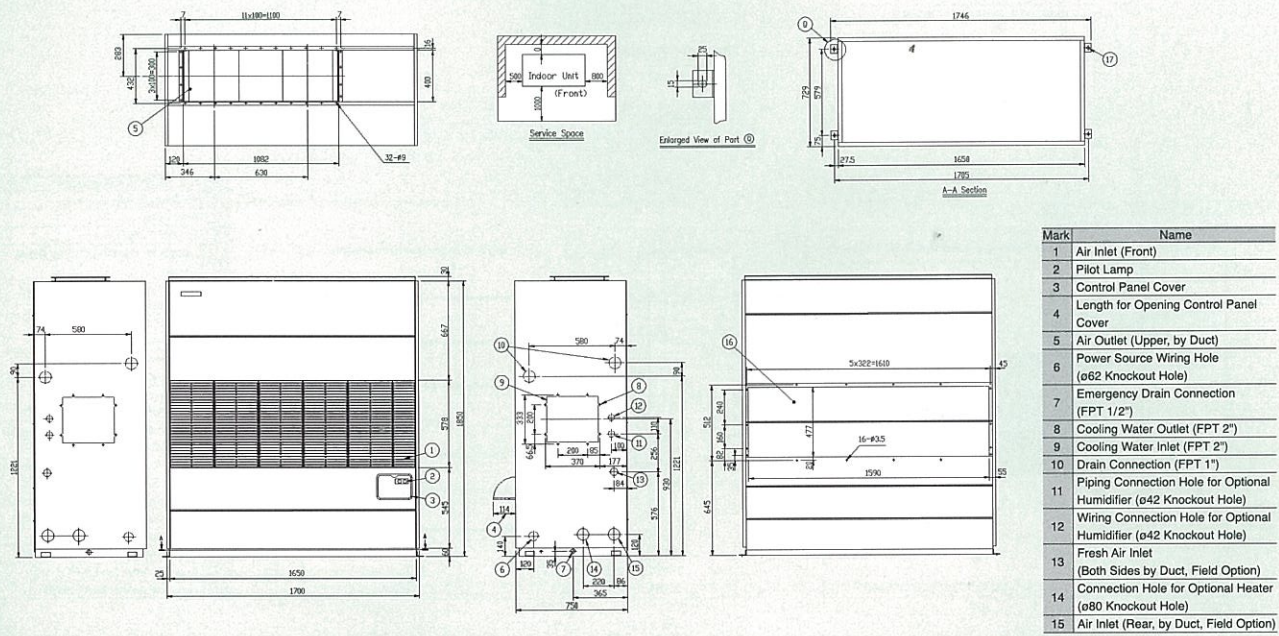


RP-15W5



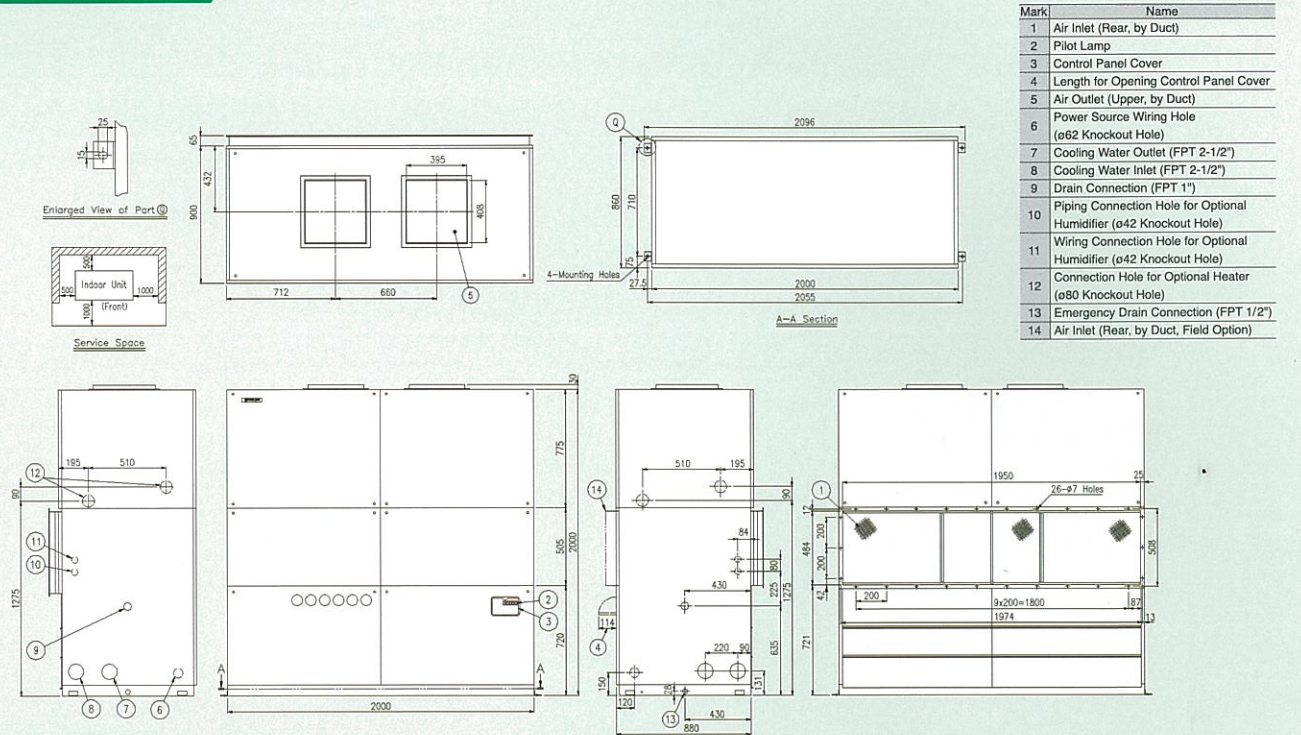
DUCT-CONNECTION TYPE (風管型)

RP-20WL5

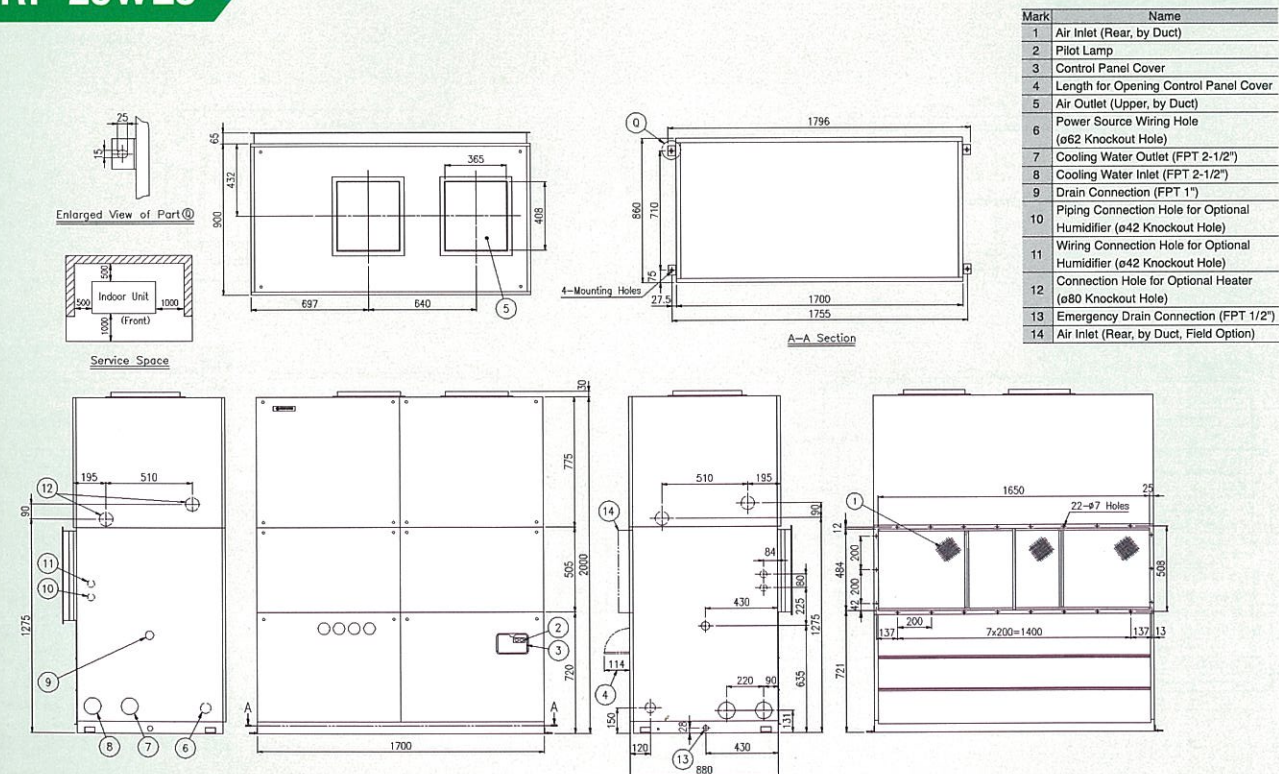


DUCT-CONNECTION TYPE (風管型)

RP-30WL5



RP-25WL5



RP-40WL5

